

POLANIK
Poland, Życzliwa 11
97-300 Piotrków Trybunalski

tel. +48 44 646 44 81
tel. +48 44 648 50 89
fax +48 44 646 43 58

e-mail: info@polanik.com
www.polanik.com



INSTRUCTION MANUAL

Competition pole vault stand

STT-65



File: 2016-12-15

PRODUCT SUPPORT
Pawel Ciechanowski
p.ciechanowski@polanik.com



Thank you for choosing Polanik competition pole vault stand.

Contents

Chapters	Page
I. Characteristics of the pole vault stand STT-65	3
II. Parts list (sets)	4
III. General assembly description	5
IV. Assembly	6
V. Final adjusting	10
VI. Remarks on maintenance and operating the stands	10
VII. Technical drawings	
Drawing no. 1 – Positioning the stands and the landing area towards the pole vault box	11
Drawing no. 2 – Assembled stands	12
VIII. How to play the attached instructional video	13

BEFORE YOU START TO ASSEMBLE THE STANDS PLEASE READ THIS MANUAL CAREFULLY AND WATCH THE SUPPLIED INSTRUCTIONAL FILM. THE PRODUCER SHALL NOT BE LIABLE FOR ANY DAMAGES WHICH ARE THE RESULTS OF THE FAILURE TO FOLLOW THIS ASSEMBLY MANUAL.

We would like to thank you for choosing POLANIK pole vault stand type STT-65. The main distinguishing feature of the stand is the modern construction designed and patented by POLANIK Company.

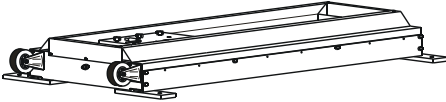
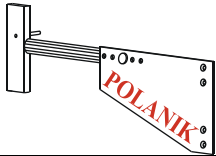
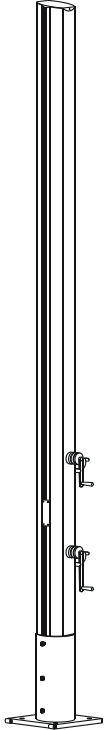
I. Characteristics of the pole vault stand STT-65

The key features of the stand are as follows:

1. Innovative construction:
 - Inventive and patented lifting mechanisms of the crossbar support and sliding mechanism of the post.
 - Stand posts are made of specially designed anodised aluminium profiles which are protected by patent.
 - Steel measuring tape is installed in the special C-shaped guiding groove. If necessary it is easily replaced without dismounting the lifting mechanism of the crossbar support.
2. High durability:
 - All stand parts are manufactured from long-lasting materials like aluminium, stainless steel, brass and plastic. Steel elements
 - All tube ends are protected with plastic caps. They stop water from getting inside the construction and provide good finish and appearance.
 - Steel elements are hot galvanized or electro-galvanized. All ratchet mechanism casings are additionally coated with powder paint.
3. High quality:
 - STT-65 complies with the international quality standards what is confirmed by the certificate of the International Association of the Athletics Federations (IAAF).
4. Easy operating:
 - Stand can be assembled and disassembled quickly. Assembly (or disassembly) takes approximately 40 minutes done by 2 people.
 - Crossbar lifting mechanism and post sliding mechanism work very quietly and smoothly.
 - Wheels installed in the bases help significantly to move the stands to desired positions
 - Crank mechanisms are equipped with special brakes which secure the cranks from uncontrolled movements.
 - Each crossbar support is adjusted in the range of 15 cm.

We deliver each stand to a customer in 3 partially assembled units: base, post and crossbar support. They should be put together according to this manual (see drawing no. 2 on page 14) and enclosed instructional film.

II. Parts list (sets)

Item	Part/set description	Q-ty Pcs.	Draw. no.	Part/set sketch
1	Base + screw M 20x40 (8 pcs) + washer 20 (8 pcs)	2	1, 2	
2	Crossbar support	2	1, 2	
3	Post + countersunk hex key screw M 10x40 (8 pcs)	2	1, 2	

III. General assembly description

The sequence of operations connected with assembly process is described in detail in the next chapters of this manual. Assembly process is also presented by the enclosed instructional video.

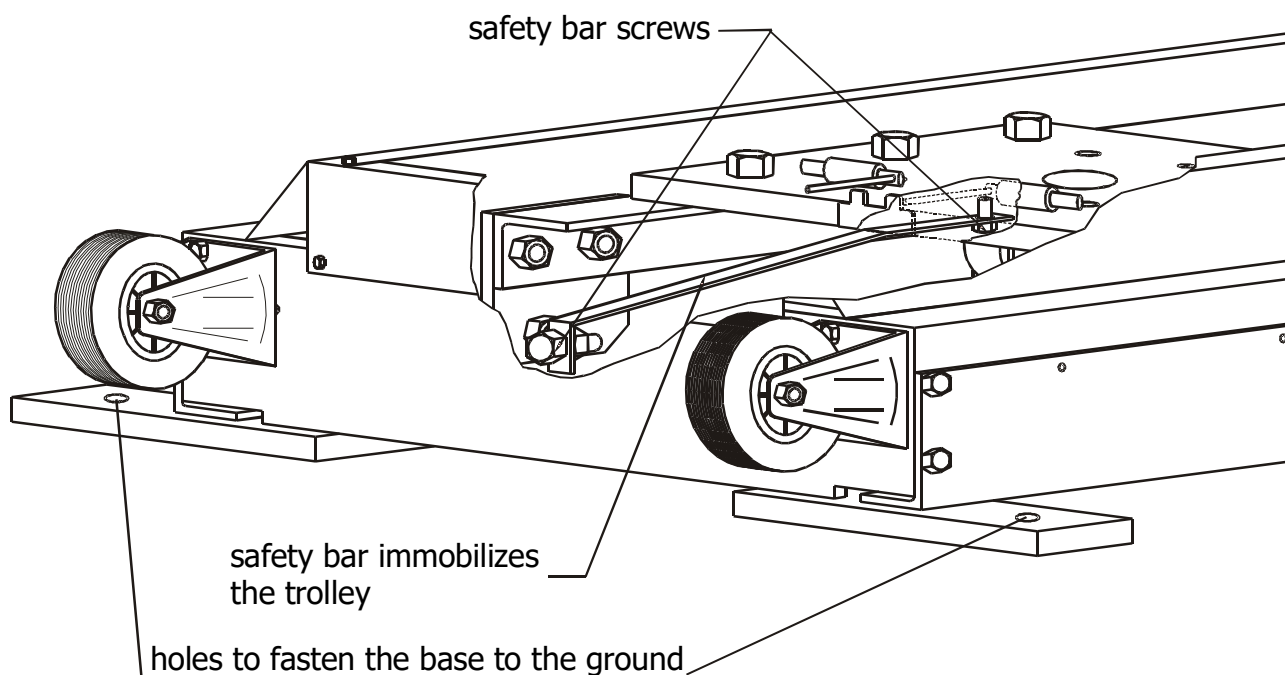
STT-65 is delivered in three partially assembled units. The set contains two bases (item 1, draw. no. 1 and 2), two posts (item 3, draw. no. 1 and 2) and two crossbar supports (item 2, draw. no. 1 and 2) – left and right.

You should gather the following tools before you start to assemble the stands:

- metric hex key no. 6 and 8
- metric flat wrench no. 13
- metric flat wrench no. 19
- metric flat wrench no. 30

We recommend that the assembly process would take place at the target location because it is easier to move separate stand parts than the whole structure.

The trolleys in the bases are secured from uncontrolled movements by means of special safety bars while the set is transported. The safety bar should remain fastened until the post is screwed down to the trolley of the base. After that stage has been completed you have to remove the safety bar because one of the cog belt ends is to be mounted there.

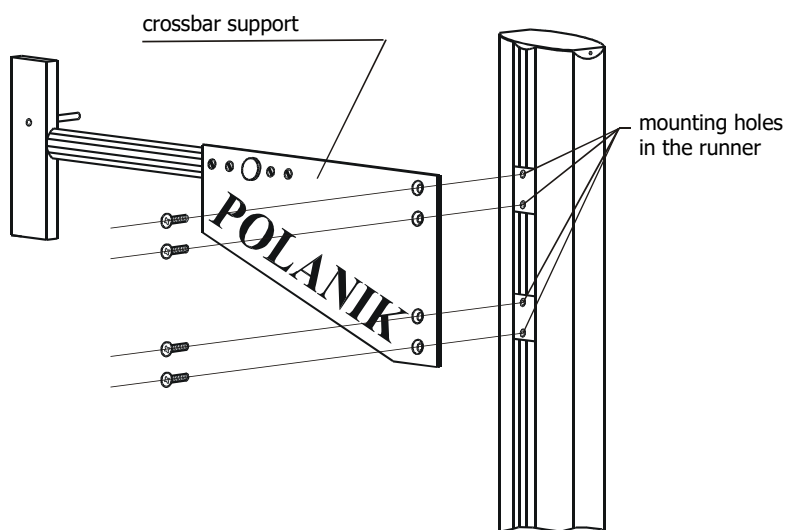


IV. Assembly

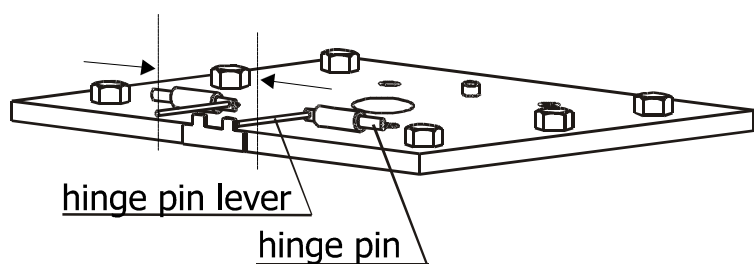


WARNING: failure to follow the sequence of these assembly operations could result in serious accident or damages to the construction.

Place one base on the left side and the other base on the right side of the landing area according to the IAAF rules. The position marked "0" on the bases should be lined up with the shortest edge of the pole vault box – see draw. no. 1 on page 13.

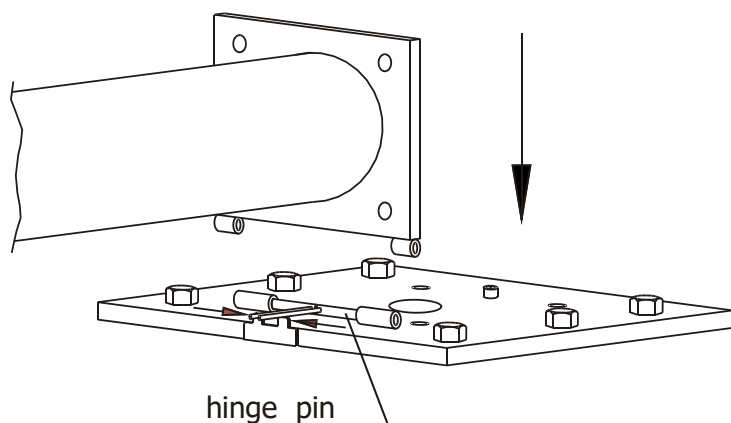


Next screw down crossbar supports to the posts while they are resting on the ground. Use 4 countersunk screws for each support. The screws are temporarily mounted in the runners of the posts.

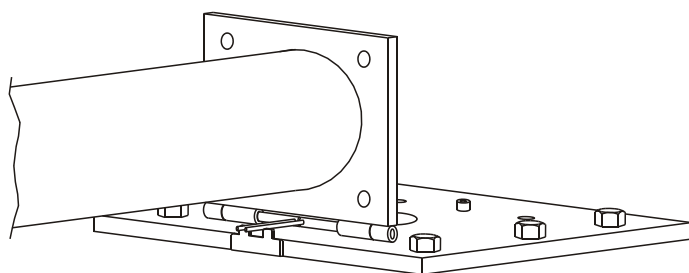


After that the post is ready to be installed on the base trolley.

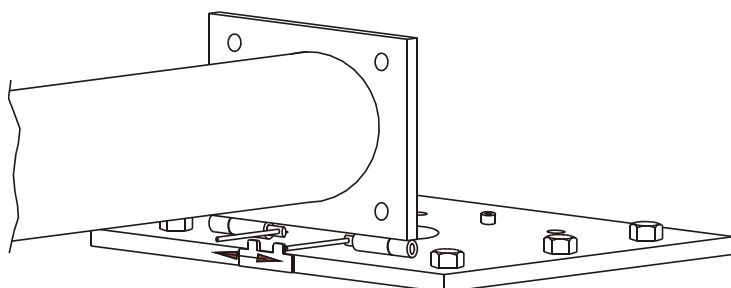
Unscrew screws M20x40 (4 pcs) and remove washers 20 (4 pcs). Press hinge pin levers according to the arrows.



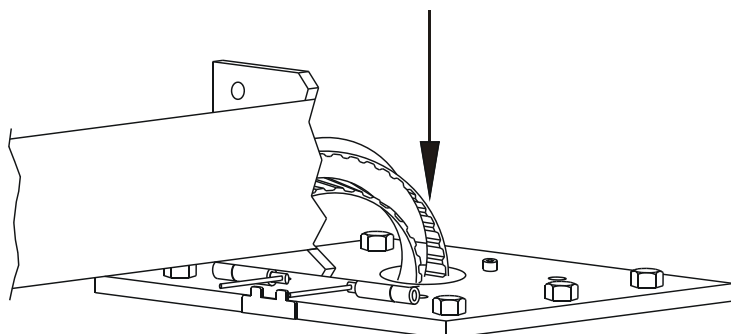
Position stand post foot over the hinge.



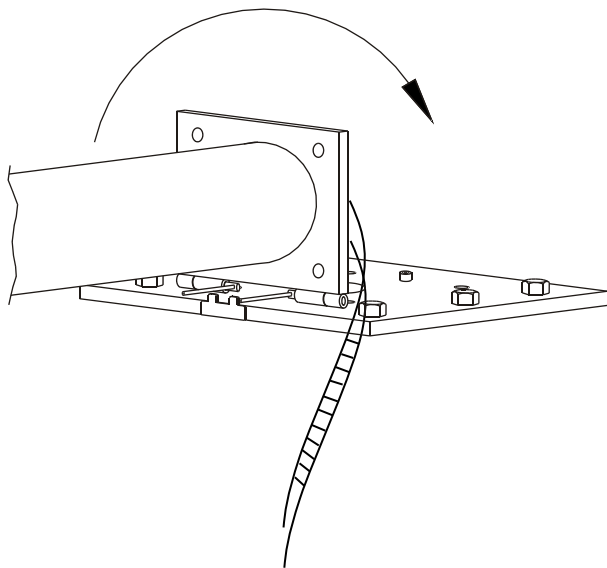
Put stand post foot into the hinge.



Release hinge pin levers, which spring back automatically to their working positions and connect post foot with base trolley. That pivotal joint is used to put posts in the upright position.

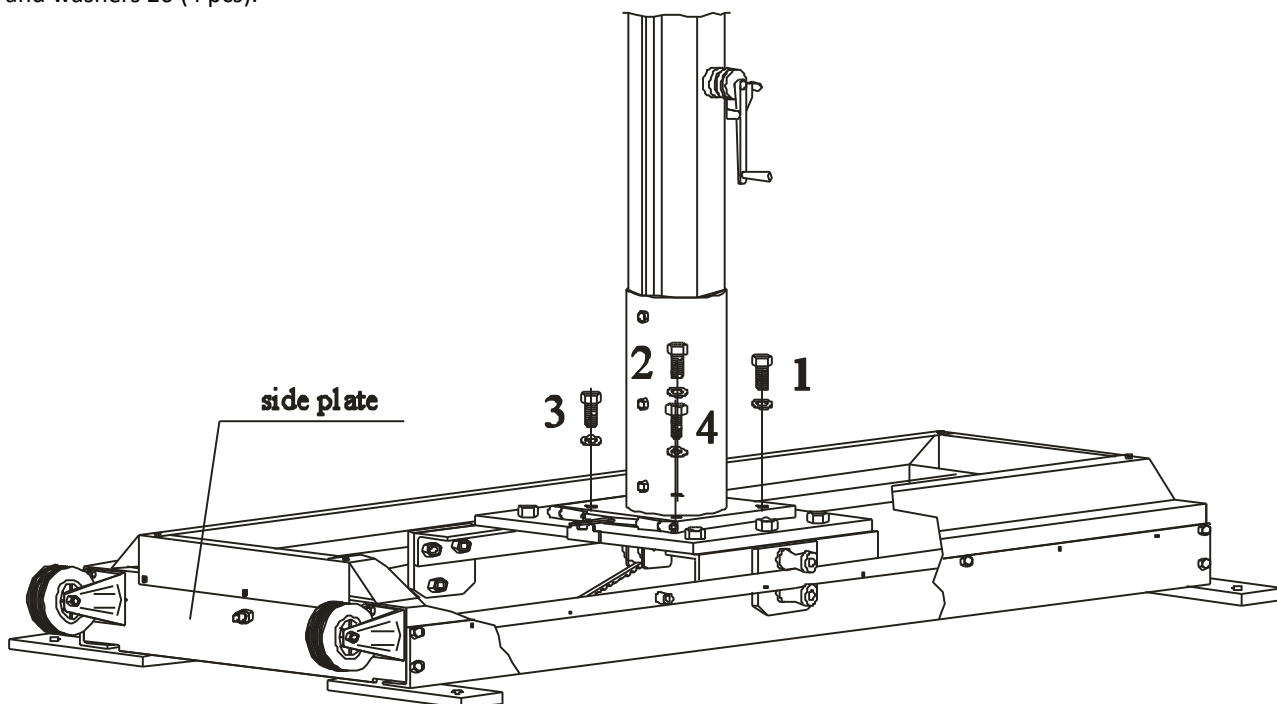


Pull out the cog belt ends from post profile and thread them through the hole in base trolley

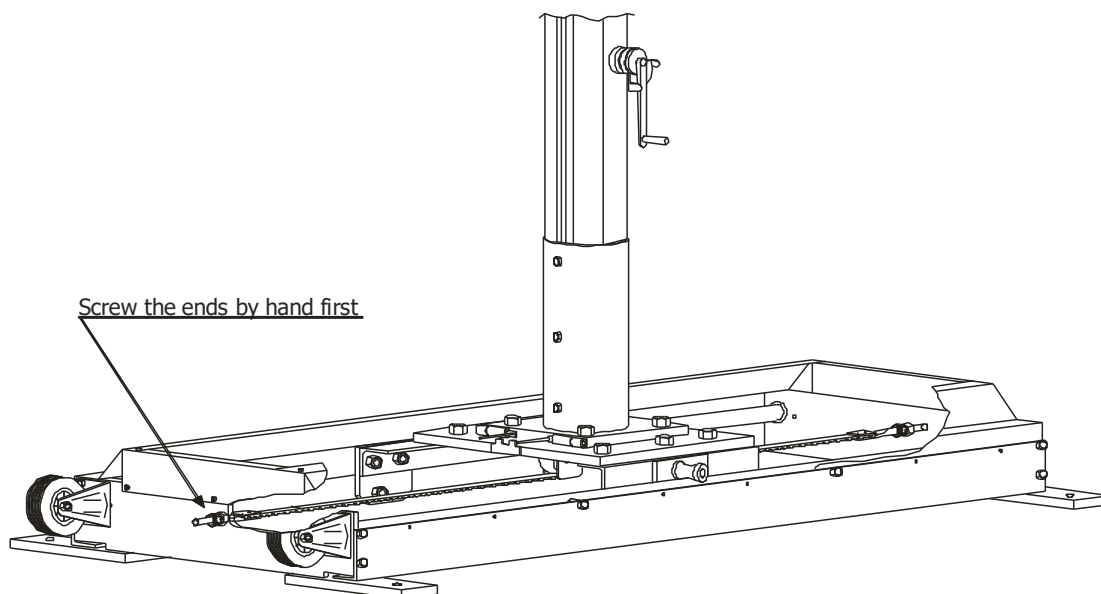


While holding the cog belt ends under the trolley plate, lift post to the upright position.

Next, whilst one person is holding post, the other person is screwing post to trolley plate with screws M20x40 (4 pcs) and washers 20 (4 pcs).

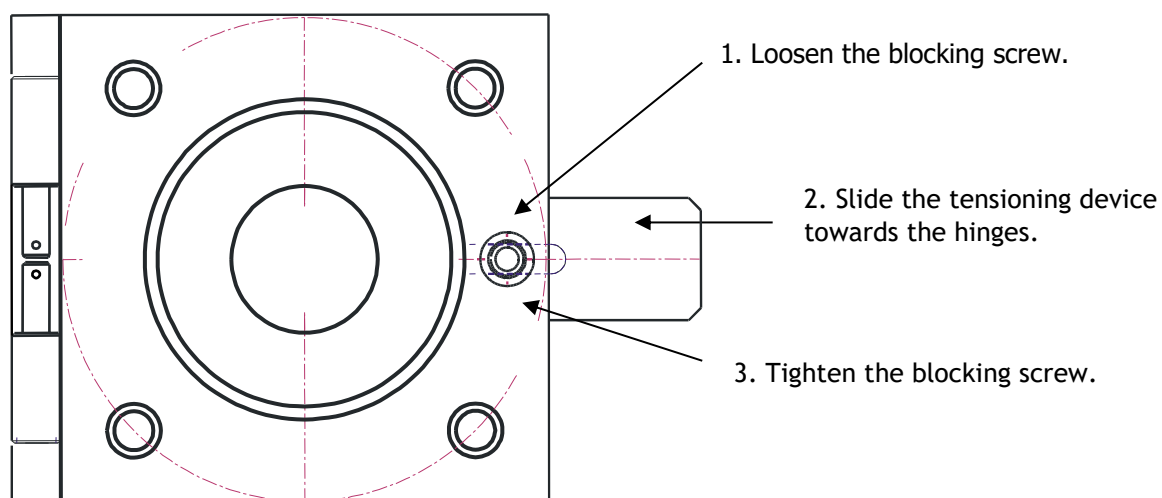


Screw down the screws which are opposite the trolley hinge first. Next remove safety bar (see the drawing on page 6). **Safety bar should be kept for further use – it makes the disassembly process and transport of STT-65 easy and safe.** Now install the cog belt ends. One end should be screwed to the base side plate where safety bar was mounted and the other one ought to be fastened to the opposite side. Both ends must be screwed temporarily – only by hand.



Make preliminary tensioning with tensioning device (see image below).

Base trolley – top view



Now tighten the nuts (you have screwed temporarily in base side plates, shown on page 10) with wrench. Correctly tensed cog belt should deflect no more than 2 cm approx. when pressed with index finger.

V. Final adjusting

- Cog belt tensioning should be done scrupulously. If cog belt is too loose, it may slip on toothed wheels in post sliding mechanism. On the other hand, when cog belt is too tense, it may cause too high resistance and load of sliding mechanism .
- Post sliding mechanism and crossbar support lifting mechanism are equipped with special brakes which ought to be blocked after stands and crossbar support have been positioned properly.
- Stands are ready for use provided that the above operations are completed.

VI. Remarks on maintenance and operating the stands

As the producer we have done our best to make pole vault stands guarantee maximum safety level, be easily operated and reliable in use. However the stands like any other pieces of sports equipment requires periodical inspections and must be used according to the instruction manual, the IAAF rules and operated by authorized personnel. Basic rules to remember:

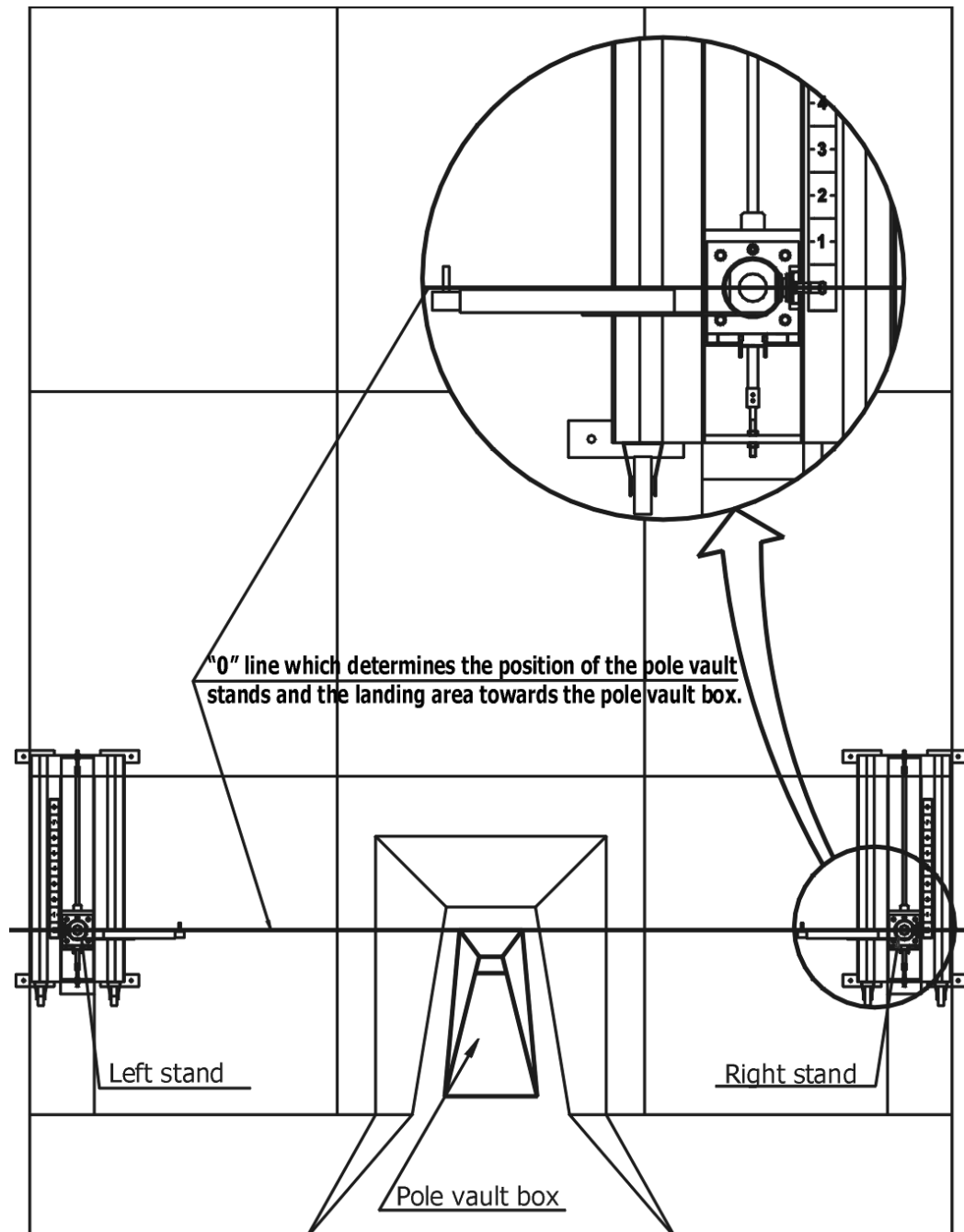
- After assembly and positioning stage the stands should be fastened to the ground, use the mounting holes shown on page 6. The omission of that operation could cause stands overturn and result in serious accident or damages.
- Base wheels should be only used to transport stands on level surfaces and within short distance.
- You should unscrew posts from bases and secure base trolleys with safety bars to transport the stands for long distance.
- While lifting crossbar support or sliding post on base by means of crank mechanisms make sure to slow down before reaching extreme positions. That allows you to avoid “banging” which can result in excessive load of the mechanisms.

To keep the stands in good condition, the following maintenance operations and periodical inspections should be executed after every athletic season:

- Clean base trolley rails.
- Grease post sliding mechanism.
- Grease plastic guide rolls of base trolley (you need to dismount base covers first).
- During longer idle periods and after athletics season the stands must be obligatory stored in a dry, roofed room in minimal temperature 5°C.
- Adjust cog belt tension if necessary.

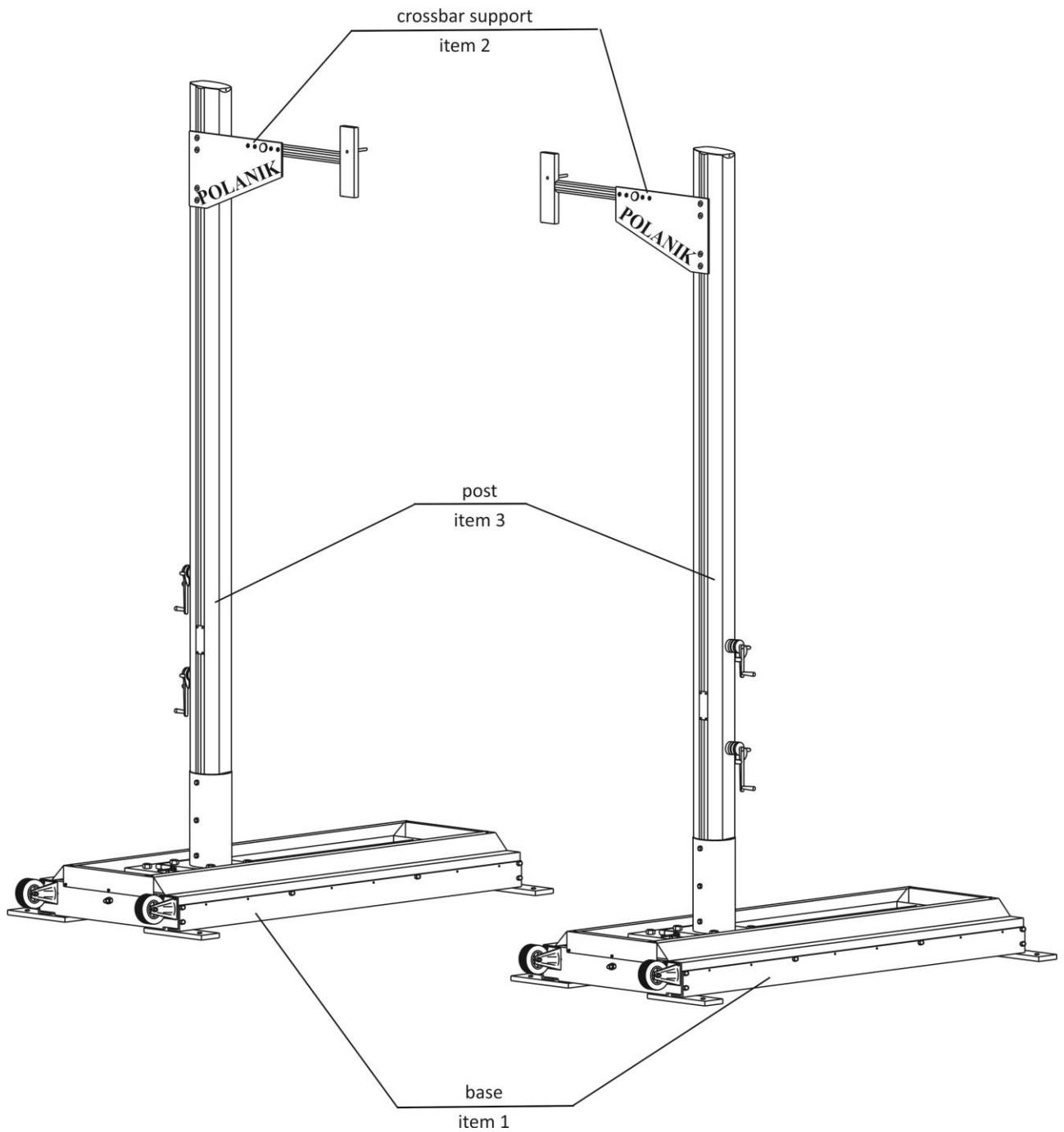
Even the best technical solutions cannot substitute for common sense. Pole vaulting should be taken place under the supervision of qualified trainers. The producer shall not be liable for any incidents caused by improper stands assembly or their misuse.

VII. Technical drawings



Positioning the stands and the landing area towards the pole vault box

Drawing no. 1



Assembled stands (left and right)

Drawing no. 2

VIII. How to play the attached instructional video

The enclosed instructional CD can be viewed on VCD/DVD players and PC or MAC computers. If it does not start automatically, please explore CD main directory and click the file with .exe extension.

Minimal hardware requirements:

PC

P166 MMX, 32 MB RAM, CD-ROM, VIDEO CARD
WINDOWS 9x, NT 4.0, 2000, WINDOWS MEDIA PLAYER

MAC

QUICK TIME PLAYER WITH QUICK TIME MPEG EXTENSION

You can also find on CD:

-IAAF certificate (in .jpg format) and a copy of this assembly manual (in .pdf format – requires Acrobat Reader[®]).