

POLANIK
Poland, Życzliwa 11
97-300 Piotrków Trybunalski

tel. +48 44 646 44 81
tel. +48 44 648 50 89
fax +48 44 646 43 58

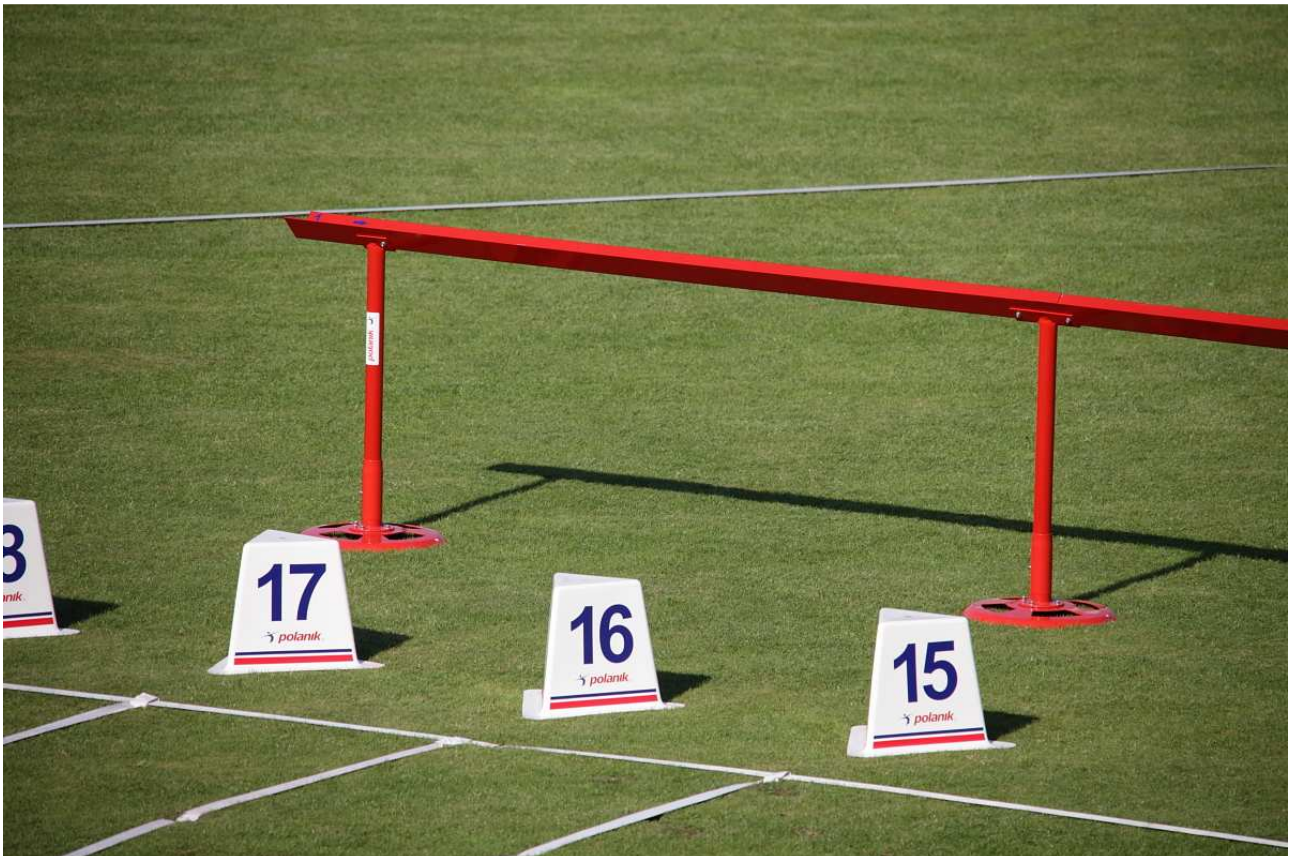
e-mail: info@polanik.com
www.polanik.com



INSTRUCTION MANUAL

Shot put return channel

SRC14-S0364



File: 2014-11-06

PRODUCT SUPPORT
Pawel Ciechanowski
p.ciechanowski@polanik.com

Thank you for choosing Polanik shot put return channel.

Contents

Chapter		Page
I.	General characteristics	2
II.	Technical specification	2
III.	Parts list (part sets)	2
IV.	Assembly description	3
V.	Remarks on maintenance and operating	7
VI.	Declaration	8

I. General characteristics

Shot put return channel SRC14-S0364 is designed to easily and quickly retrieve shot puts from the landing sector during competitions and training meetings of shot put. Main features of the channel:

- innovative construction – constituted by elements which are easy to assemble, transport and store,
- easy operating – fast assembly and disassembly processes,
- high durability and quality – all metal elements are galvanized and additionally powder painted.

II. Technical specification

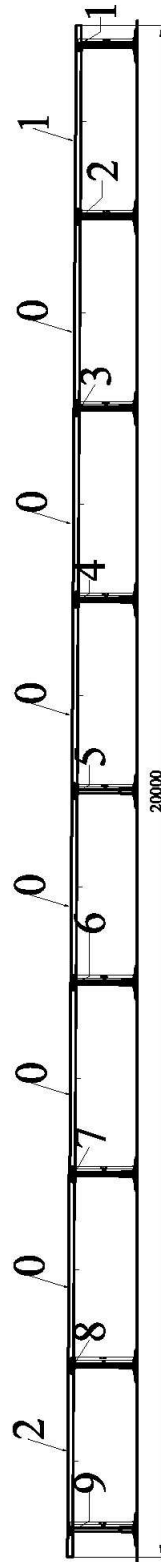
Product code	SRC14-S0364
Channel type	modular
Construction	8 steel angle sections mounted on 9 pillars
Max. shot dia. [mm]	135
Max. shot weight [kg]	12
Level difference [m]	from 0,88 to 0,76
Channel length [m]	20
Pillar base dia. [m]	0,44
Net weight	154

III. Parts list (part sets)

Item	Part/set description	Q-ty pcs
1	Channel standard segment marked "0"	6
2	Channel end section marked "1"	1
3	Channel start section marked "2"	1
4	Pillars marked from "1" to "9" + screws	9
5	Pillar sleeve + screws	9
6	Pillar base + screws	9

IV. Assembly description

Slide each pillar (item 4) into pillar sleeve (item 5) and secure it with included screw. Next fasten pillars with sleeves to bases (item 6). Set up complete pillars (assembled pillars: item 4 + item 5 + item 6) near a throwing sector line. Note that pillars are marked from 1 to 9. Pillar 1 should be positioned at throwing circle. Next mount channel sections according to the scheme below.



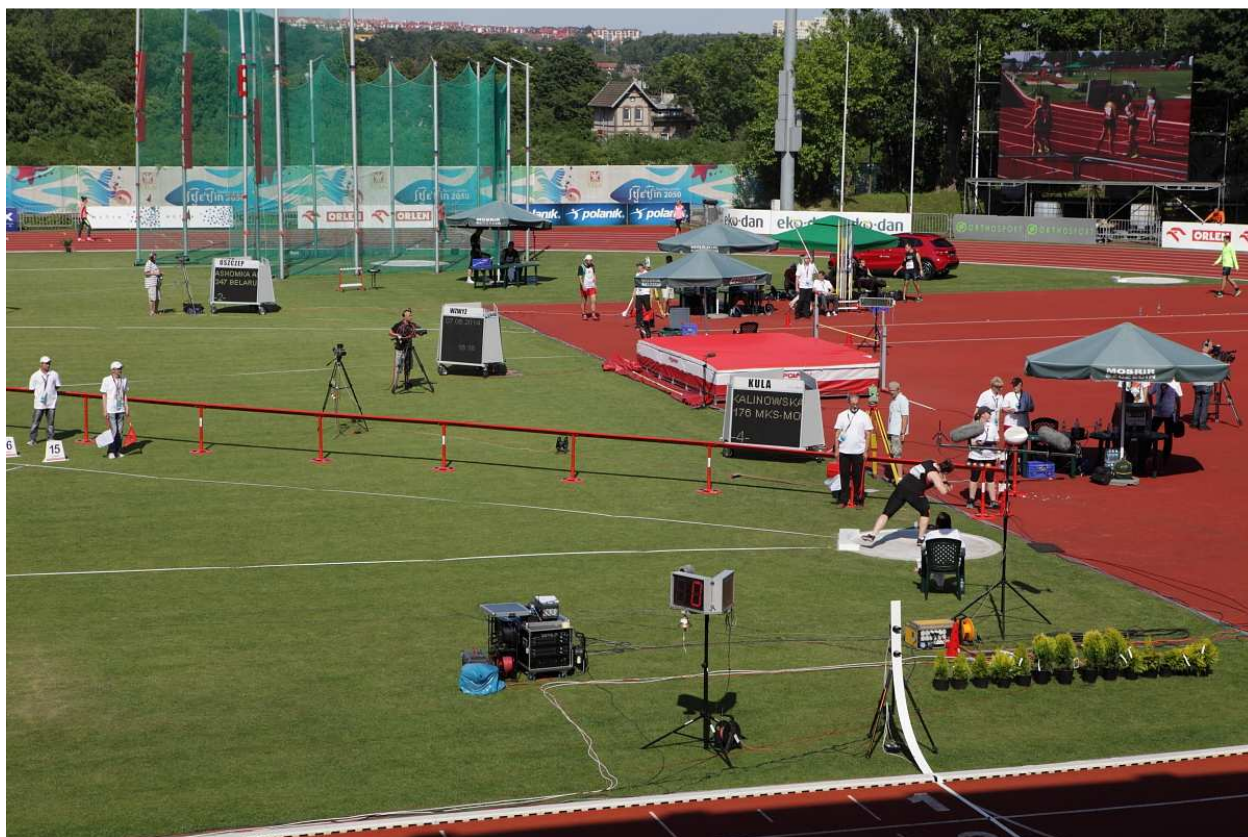
The correctly assembled shot put return channel is presented below.



POLANIK
Poland, Życzliwa 11
97-300 Piotrków Trybunalski

tel. +48 44 646 44 81
tel. +48 44 648 50 89
fax +48 44 646 43 58

e-mail: info@polanik.com
www.polanik.com



POLANIK
Poland, Życzliwa 11
97-300 Piotrków Trybunalski

tel. +48 44 646 44 81
tel. +48 44 648 50 89
fax +48 44 646 43 58

e-mail: info@polanik.com
www.polanik.com





V. Remarks on maintenance and operating

After competitions and training the channel ought to be swept from dust and sand. Next clean it with commonly available cleaning agents and then dry it. When not used the channel should be disassembled and stored in a dry roofed place. Any defects in paint coating revealed must be repaired with anticorrosive paint.

Even the best technical solutions cannot substitute for common sense. The usage of the product must take place under the supervision of sports facility technical staff. The producer shall not be liable for any incidents caused by the improper assembly or misuse of the product. We reserve the right to alter without prior notice the construction and colours of the product.

VI. Declaration

1) No. 2014-06-30

2) Issuer's name: POLANIK

Issuer's address: Życzliwa 11, 97-300 Piotrkow Tryb.

3) Object of declaration:

No.	Description of goods	Code
1	Shot put return channel	SRC14-S0364

4) The object of declaration described above is in conformity with the requirements of the in-house technical norms.

Additional Information

5) Declaration for:

Buyer/Distributor/User

Signed for and in behalf of:

POLANIK

2014-06-30 Piotrków Tryb.
(Date and place of issue)

6) Pawel Ciechanowski
Product Manager

(Name, function)



(Signature or equivalent authorized by the issuer)